



# ENVISIONING IMPROVED REGIONAL

# Mobility

June 2019

**THE TOLL 49 SEGMENT 6 PROJECT** is an initiative of the North East Texas Regional Mobility Authority (NET RMA) to explore potential route options for a proposed extension of Toll 49 north to US 271. The limits of the proposed Toll 49 Segment 6 are from the Toll 49 Segment 5 eastern terminus at SH 110 to US 271 in Smith County, Texas. Through a comprehensive evaluation process and public involvement effort, this feasibility study will identify three (3) route options to carry forward to a federally required Environmental Impact Statement.

## WHERE WE ARE TODAY

With input from stakeholders and the general public, the study team has developed **six (6) proposed route options** for further public comment and refinement.

## Purpose

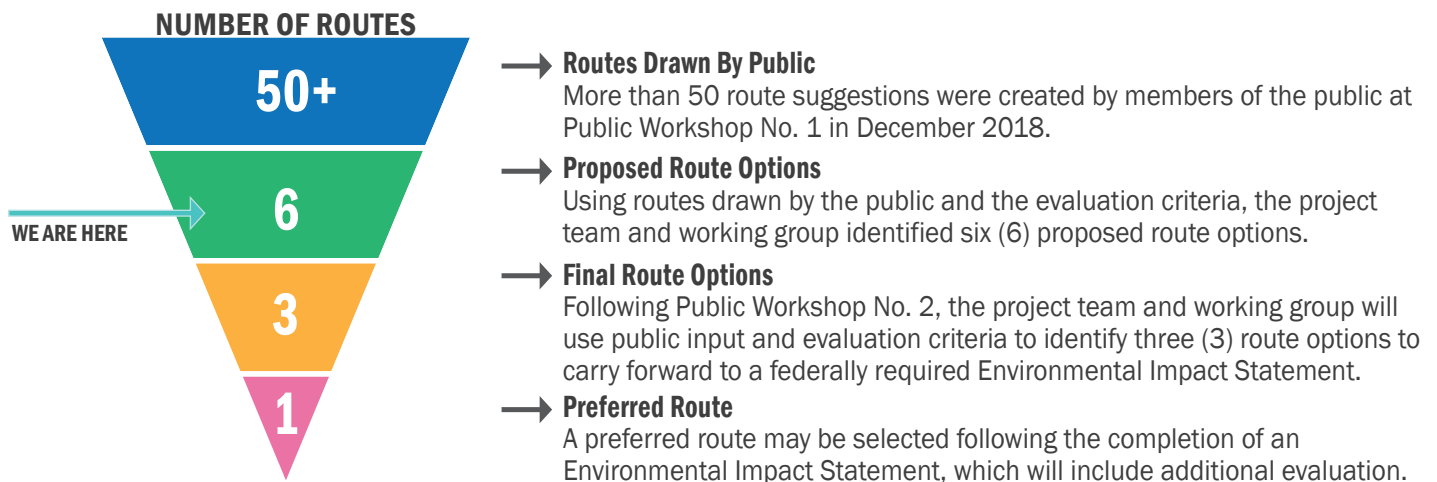
The proposed Toll 49 Segment 6 project will identify a route that improves the efficiency of the regional transportation network and enhances mobility throughout Northeast Texas.

## Community Driven Effort

The study will be locally driven from inception to final recommendation. There will be numerous opportunities for the public to provide input and feedback regarding potential route options and the evaluation process. To stay informed, sign up for updates on the website noted below.

## ROUTE EVALUATION PROCESS

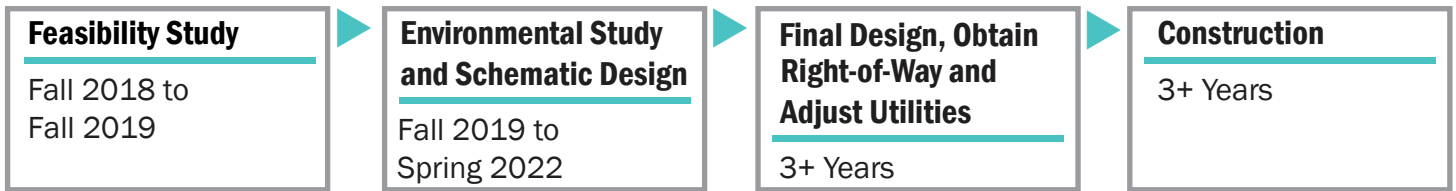
The feasibility study will last approximately one year, ending Fall 2019. With input received in June 2019, the NET RMA will identify three (3) route options to carry forward to a federally required Environmental Impact Statement.



For more information, visit [www.netrma.org/projects/segment-6](http://www.netrma.org/projects/segment-6), or contact Darren Dodson at 512-241-2208

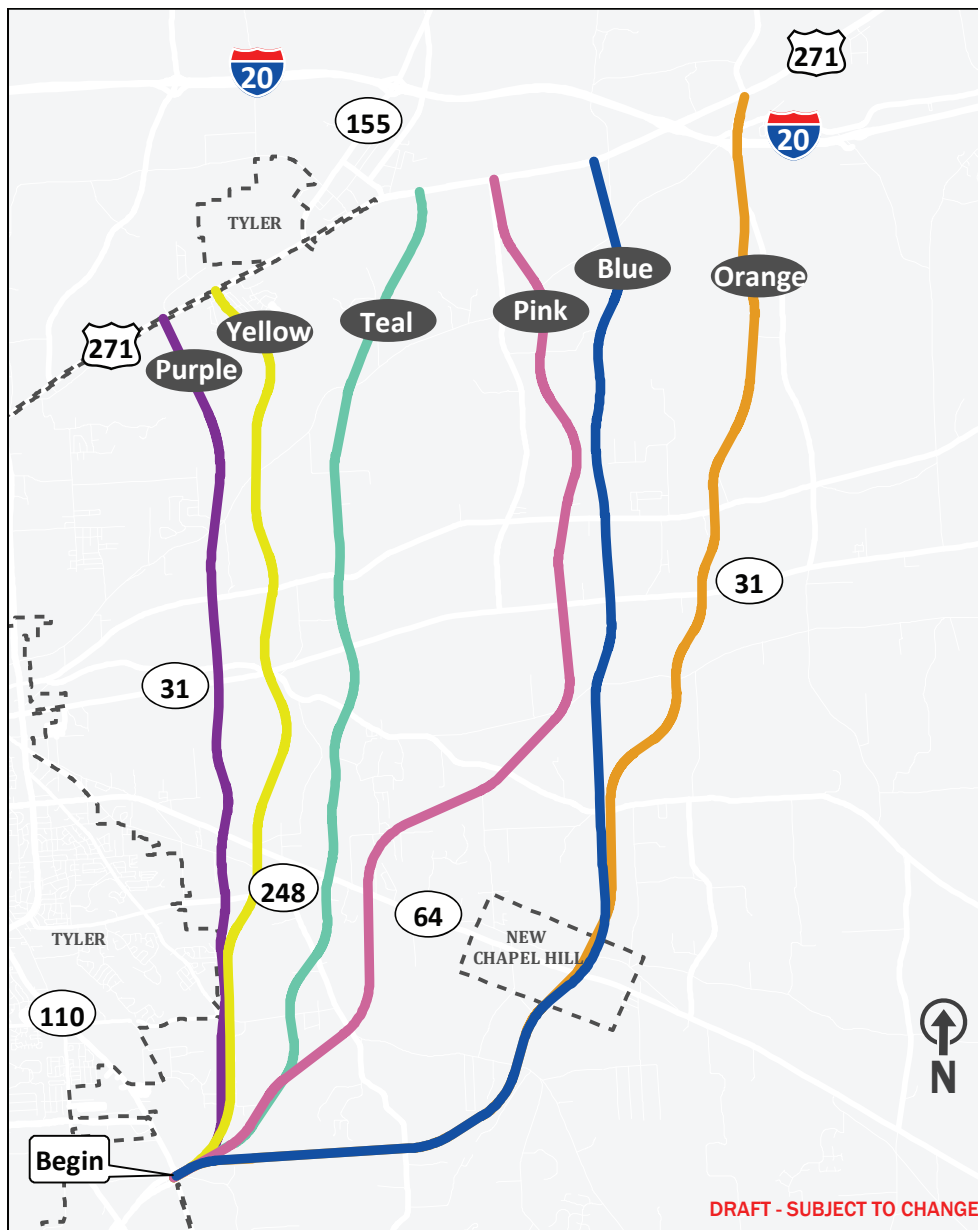
## PROJECT DEVELOPMENT PROCESS

We Are Here ▼



\* Advancement from step-to-step is contingent upon the outcome of the previous step and the availability of funding.

## PROPOSED ROUTE OPTIONS



The six (6) proposed route options were developed from more than 50 routes suggested by the public at the first public workshop held December 11, 2018.

Following the workshop, the project team and working group refined the public's suggestions down to six (6) proposed route options, using the project evaluation criteria.

After the second public workshop, the project team and working group will use public input and additional evaluation criteria to identify three (3) route options to carry forward to a federally required Environmental Impact Statement.

### QUESTIONS? CONCERNS?

#### AT THE WORKSHOP

Talk to a member of the project team or fill out a comment form.

#### MAIL

Toll 49 Segment 6 Project  
 C/O CP&Y  
 P.O. Box 2727  
 Longview, TX 75606

#### ONLINE

[www.netrma.org/projects/segment-6](http://www.netrma.org/projects/segment-6)

If you or your organization would like to request a presentation, please contact a member of the project team.

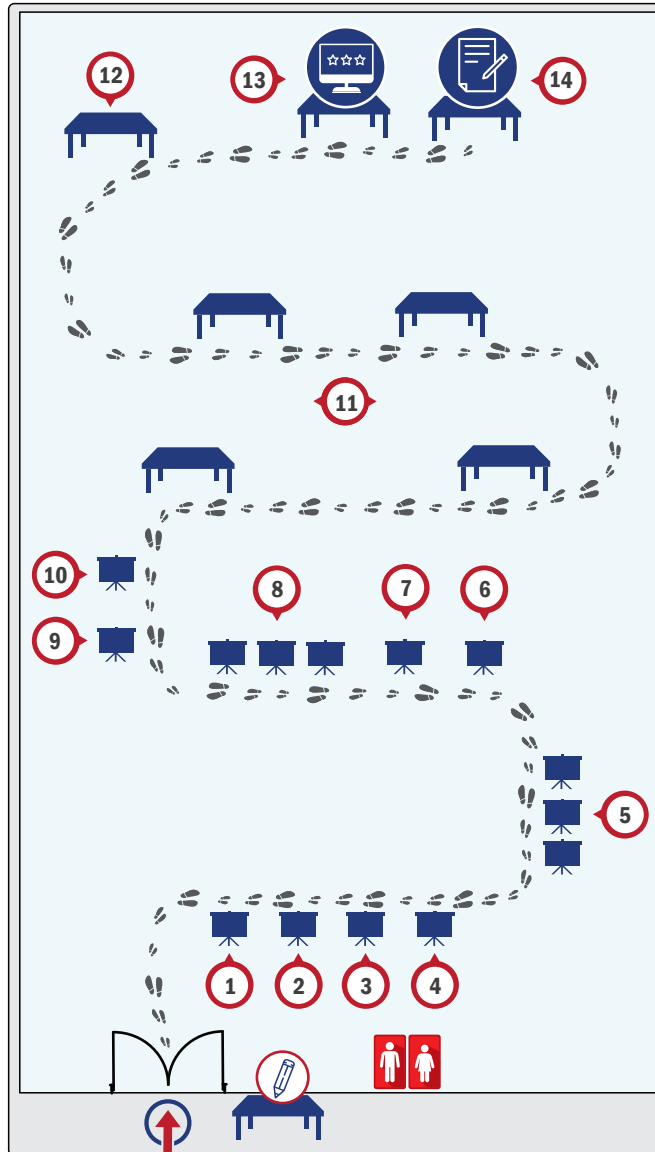


# INFORMATION ROADMAP

Public Workshop No. 2 – June 4, 2019

## WORKSHOP GUIDE

- 1 **Welcome**  
Welcome to Toll 49 Segment 6 Public Workshop No. 2.
- 2 **Study Area**  
The northern limits of the study area are at US 271.
- 3 **Project Development Process**  
We are currently in the Feasibility Study phase of the project.
- 4 **Goals and Objectives**  
The public had the opportunity to respond to a survey regarding the project goals and objectives at Public Workshop No. 1 in December 2018. All goals and objectives received a majority of positive responses.
- 5 **Conceptual Cross Sections**  
The conceptual cross sections have not been changed since Public Workshop No. 1.
- 6 **Environmental Constraints**  
The environmental constraints map shows community and natural resources that the project team is considering in route development.
- 7 **Routes Drawn By Public**  
This map shows a compilation of all routes suggested by the public at Public Workshop No. 1.
- 8 **Evaluation Criteria**  
The project evaluation criteria were developed from the project goals and objectives, with input from the stakeholder working group. These criteria were used to determine the six (6) proposed route options. The "Additional Evaluation Criteria" will be added to the original evaluation criteria to determine the three (3) route options to carry forward to a federally required Environmental Impact Statement.
- 9 **Route Evaluation Process**  
This board shows the process for identifying a preferred route from the 50+ routes initially drawn by the public.
- 10 **Proposed Route Options**  
Using routes drawn by the public and the project evaluation criteria, the project team and stakeholder working group identified six (6) proposed route options.

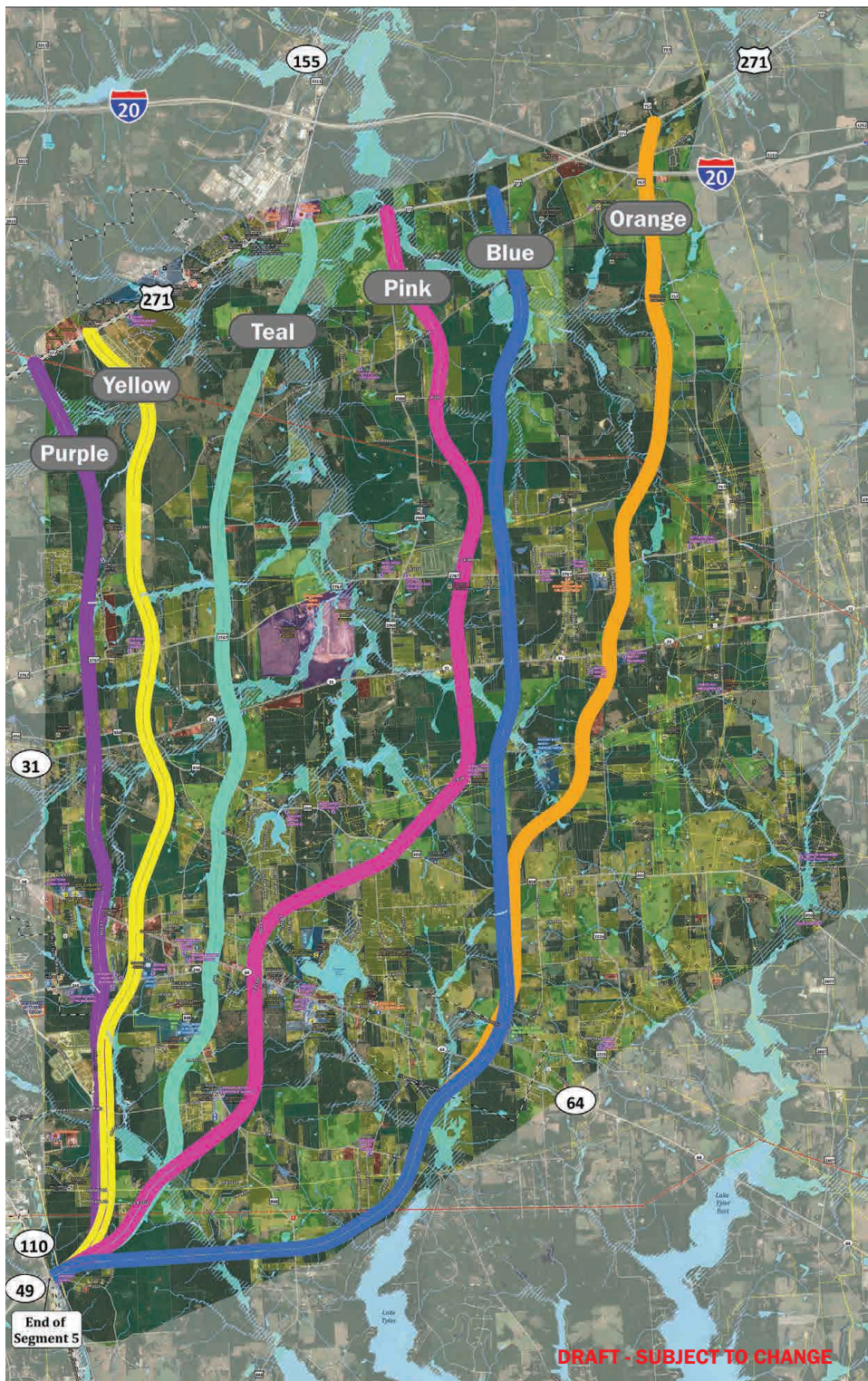


## LEGEND

- Workshop Sign-In
- Display Boards
- Table
- Survey
- Comments
- Workshop Station
- Suggested Path

- 11 **Map Stations**  
All four stations have the same maps displayed. Please proceed to a table to ask questions or provide input about the six (6) proposed route options. A member of the project team will be available to answer any questions you may have. Markers, pens and Post-it notes will be provided to leave comments and questions directly on the maps.
- 12 **Google Earth Station**  
The proposed routes are available on Google Earth to view up close.
- 13 **Online Survey Station**  
Please take an online survey to provide your input about the proposed route options.
- 14 **Comment Station**  
Please fill out a comment form to provide input about the proposed route options, or ask any questions you might have.

The Toll 49 Segment 6 Proposed Route Options were developed from the routes suggested at the first public workshop, held December 11, 2018. Below is a map of each of the proposed route options. If you would like to see a larger, higher resolution map, please visit the project webpage at NETRMA.org. **Please provide your feedback on the individual routes that follow.**



Fill in a bubble for the answer that best corresponds with how you feel.

**1. How would you rate the Purple Route?**

① — ② — ③ — ④ — ⑤  
Strongly Dislike Strongly Like

**2. How would you rate the Yellow Route?**

① — ② — ③ — ④ — ⑤  
Strongly Dislike Strongly Like

**3. How would you rate the Teal Route?**

① — ② — ③ — ④ — ⑤  
Strongly Dislike Strongly Like

**4. How would you rate the Pink Route?**

① — ② — ③ — ④ — ⑤  
Strongly Dislike Strongly Like

**5. How would you rate the Blue Route?**

① — ② — ③ — ④ — ⑤  
Strongly Dislike Strongly Like

**6. How would you rate the Orange Route?**

① — ② — ③ — ④ — ⑤  
Strongly Dislike Strongly Like

**7. Please rank the routes in order of your preference, with "1" being the route you like the most and "6" being the route you like the least.**

Fill in each blank with one of the route names (i.e. Purple, Yellow, Teal, Pink, Blue, Orange).

1. \_\_\_\_\_  
2. \_\_\_\_\_  
3. \_\_\_\_\_  
4. \_\_\_\_\_  
5. \_\_\_\_\_  
6. \_\_\_\_\_

**8. Do you have any additional comments about the Purple Route?**

---

---

---

---

**9. Do you have any additional comments about the Yellow Route?**

---

---

---

---

**10. Do you have any additional comments about the Teal Route?**

---

---

---

---

**11. Do you have any additional comments about the Pink Route?**

---

---

---

---

**12. Do you have any additional comments about the Blue Route?**

---

---

---

---

**13. Do you have any additional comments about the Orange Route?**

---

---

---

---

If you have any further comments, please fill out a comment form, or visit [www.netrma.org/projects/segment-6/](http://www.netrma.org/projects/segment-6/)



# COMMENT FORM

Public Workshop No. 2 – June 4, 2019

---

---

---

---

---

---

---

---

---

---

---

---

---

---

---

---

---

---

---

---

---

---

---

---

**CONTACT INFORMATION:**      Subscribe to e-mail list?    YES    NO    ALREADY SUBSCRIBED

Name: \_\_\_\_\_

Email: \_\_\_\_\_

Address: \_\_\_\_\_

## RETURN COMMENTS:



**AT THE WORKSHOP**



**MAIL**

Toll 49 Segment 6 Project  
C/O CP&Y  
P.O. Box 2727  
Longview, TX 75606



**ONLINE**

[www.netrma.org/projects/segment-6](http://www.netrma.org/projects/segment-6)

**Official written comments will be received and accepted by the project team.** Comments must be received by Wednesday, June 19, 2019 to be included in the official record of this public workshop.