

2025

ANNUAL

NORTH EAST TEXAS REGIONAL MOBILITY AUTHORITY

REPORT



ANNUAL

▶ TABLE OF CONTENTS	▶ Chairman Remarks	5
	▶ Board of Directors	6
	▶ Member Counties & Hourglass Map	8
	▶ Powers of a RMA	9
	▶ Public Outreach	10
	▶ Linda Thomas Scholarship Program	11
	▶ Toll 49 Spring & Fall	12
	▶ Toll 49 Public Benefits	14
	▶ Priority Projects	15
	▶ Toll 49 Fun Facts	16
	▶ Road Improvements	17
	▶ Financial & Administrative	18
	▶ Executive Director Remarks	20
	▶ NET RMA Financial Summary	21



The NET RMA, in cooperation with its regional partners, will provide solutions to expedite infrastructure and mobility projects that will improve the quality of life, enhance the regional economy, and assure efficient mobility in the North East Texas region.



REPORT

2025

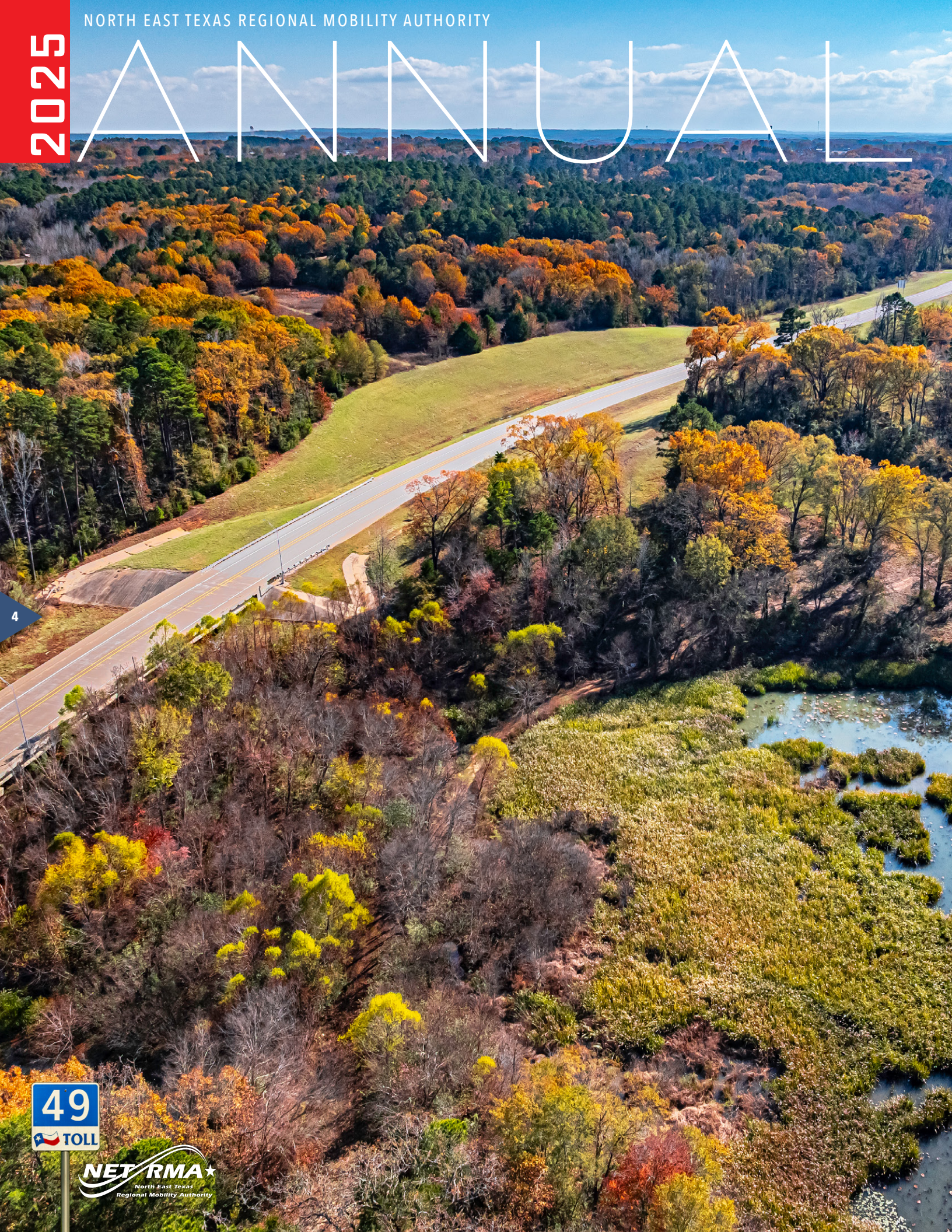


3



2025

ANNUAL



4



REPORT

► CHAIRMAN'S REMARKS



Gary Halbrooks
Chairman

The North East Texas Regional Mobility Authority (NET RMA) is about moving mobility forward in all of East Texas, it's about transportation, infrastructure improvements that will impact the quality of life and bring about economic growth in all that we do. It's about looking ahead and planning for future generations and truly realizing that is the NET RMA's mission.

As Robin Chase, an American transportation entrepreneur, stated, "Transportation is the center of the world! It is the glue of our daily lives. When it goes well, we don't see it. When it goes wrong, it negatively colors our day, makes us feel angry and impotent, and curtails our possibilities."

The Authority strives to dream about future generations and how we can make mobility and transportation better. There is no better example of this than our partnership with Rusk County to improve the Henderson Overton Branch Rail Line. Rusk County partnered with NET RMA and private entities, and received a federal government grant to make more than \$15 million in improvements in the rail line. Ultimately, their forward-thinking modernization of critical rail infrastructure will strengthen Rusk County's economy and create hundreds of jobs. The initiative also directly supported a \$250 million expansion of the West Fraser Timber Mill, positioning Rusk County as a major hub for industrial growth going forward.

It takes hard work, collaboration, and strategic planning to make something like the Henderson Overton Branch Rail Line move forward. But this is just one example of what the NET RMA is committed to: delivering a new future with improved infrastructure and transportation solutions for generations to come!

Gary Halbrooks

Chairman, NET RMA 2025



ANNUAL

▶ BOARD OF DIRECTORS



Gary Halbrooks
Smith County
Chairman



Andrea Williams-McCoy
Bowie County
Vice-Chair
Chair of Public Outreach
Committee



Keith Honey
Gregg County
Secretary



Robert Messer
Kaufman County
Treasurer
Chair of Finance
Committee



Cory Floyd
Bowie County



Matthew Nelson
Cass County



Ben Hamilton
Cherokee County



Dan Droege
Gregg County



Dave Spurrier
Gregg County
Chair of ETHG Committee



Mac Abney
Harrison County



Rush Harris
Harrison County



Dr. John Ray
Panola County
Chair of Personnel
Committee



John Cloutier
Rusk County
Chair of Member
Outreach Committee
Chair of Rail Committee



Marcia Daughtrey
Smith County



Alejandro Gauna
Smith County



Matthew Watts
Smith County



Hudson Old
Titus County



Larry Morse
Upshur County
Chair of Strategic Planning
& Project Development
Committee



Chet Clayton
Van Zandt County
Chair of Toll 49
Maintenance &
Operations



Jason Ray
Wood County



REPORT

▶ BOARD OF DIRECTORS

NEW BEGINNINGS

Hudson Old

Judge Kent Cooper appointed Hudson Old in July of 2025 to represent Titus County. Mr. Old has a bachelors degree and is the publisher of The East Texas Journal in Titus County.



Hudson Old
Titus County

Alejandro Gauna

Judge Neal Franklin appointed Alejandro Gauna in September of 2025 to represent Smith County. Mr. Gauna has dedicated over 20 years as a registered polysomnographer and is actively engaged in community leadership. A proud family man, Mr. Gauna has been married to his wife for over 21 years and is the father of two beautiful daughters.



Alejandro Gauna
Smith County

The NET RMA welcomes Mr. Old and Mr. Gauna to the board and looks forward to their contributions.



FOND FAREWELL

Curtis Rath

Curtis Rath served as the Camp County representative on the NET RMA Board of Directors from July 2022 to July 2025. Since his resignation, he has moved to be closer to his children. Mr. Rath expresses his sincere appreciation for the friendships and partnerships formed during his time on the board and for the opportunity to serve such a wonderful community through NET RMA.



Curtis Rath
Camp County

Nathan Tafoya

Nathan Tafoya served as the Titus County representative on the NET RMA Board of Directors from February 2022 to April 2025. After completing his term on the board, Mr. Tafoya looks forward to his next professional endeavor and the opportunity to pursue additional professional interests.



Nathan Tafoya
Titus County

Howard Patterson

Howard Patterson represented Smith County on the NET RMA Board of Directors from August 2024 to July 2025. Following his resignation, he has relocated to be closer to his family.



Howard Patterson
Smith County

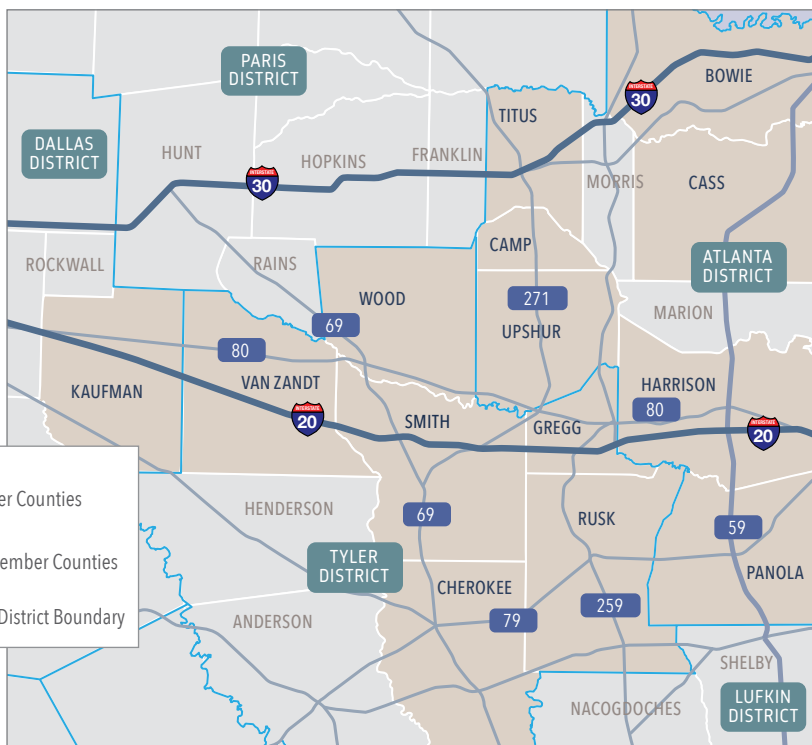
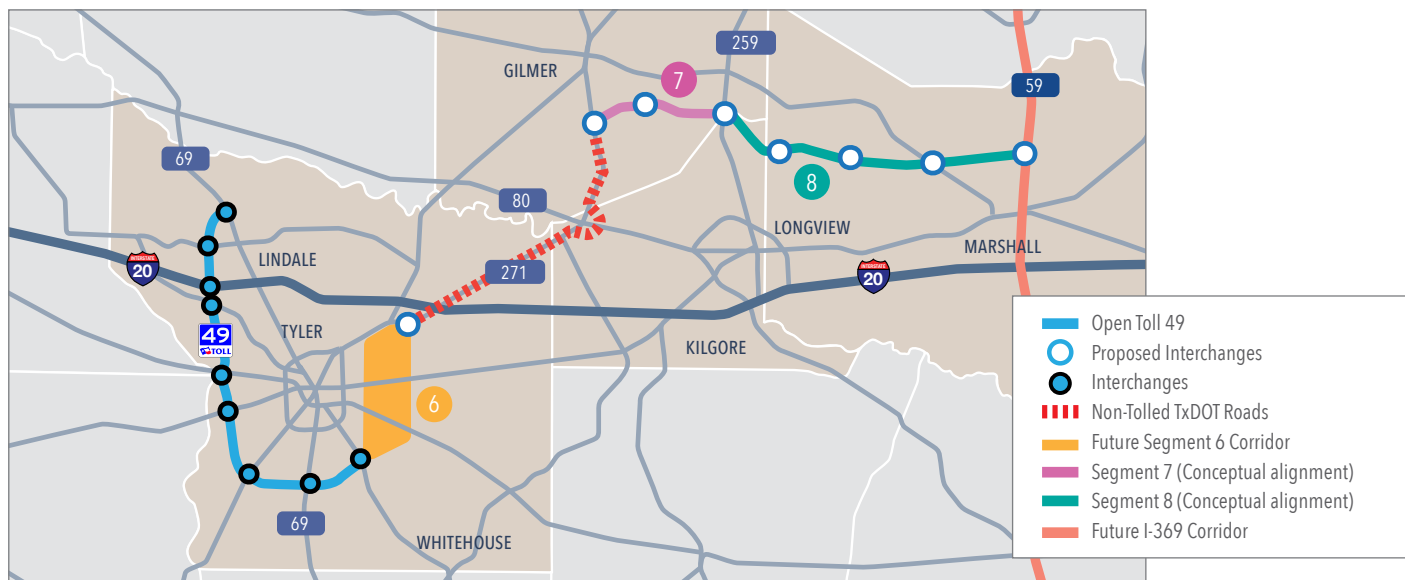


ANNUAL

CREATION & MEMBER COUNTIES

Project Creation and History

The East Texas Hourglass project is depicted below. The entire project consists of existing Toll 49 and the proposed future Segments 6, 7, and 8. Existing Toll 49 is 32 miles in length, and Segments 6, 7, and 8 would add more than 62 additional miles of tolled roadway. The project would utilize approximately 25 miles of US 271 and Loop 485, non-tolled and state-maintained roadways as a connection between Segment 6 and Segment 7.



Member Counties

- Bowie County
- Camp County
- Cass County
- Cherokee County
- Gregg County
- Harrison County
- Kaufman County
- Panola County
- Rusk County
- Smith County
- Titus County
- Upshur County
- Van Zandt County
- Wood County



REPORT

▶ THE POWERS OF A RMA

- ▶ Develop a transportation project
- ▶ Issue revenue bonds
- ▶ Establish tolls
- ▶ Acquire property for transportation projects
- ▶ Use surplus revenue to finance other local transportation projects
- ▶ Enter into a Comprehensive Development Agreement (CDA) for certain statutory authorized projects.
- ▶ Apply for federal highway and rail funds
- ▶ Enter into contracts with other governmental entities and Mexico
- ▶ Apply for State Infrastructure Bank loans
- ▶ Maintain a feasibility fund
- ▶ Set speed and weight limits consistent with state guidelines
- ▶ Enter into agreements with other governmental entities to develop a transportation project on behalf of that entity.

NOTE that SB 1489 (83rd Legislature, 2013) modified the definition of a "transportation project" for a RMA.

DEBUNKING MYTHS OF TOLLING

Myth: Tolling a road is double tax on drivers.

Truth: Taxes are mandatory. Tolls are a user fee that drivers pay when they make the choice to drive on toll roads. Courts have long ago established the distinction between tolls and taxes.

Myth: We've already paid for the roads.

Truth: Gas taxes are not enough to meet the need for improvements on existing and future corridors, and the cost of road maintenance over time is greater than the initial cost of building the road.

Eligible RMA Projects <small>(Title 43, Texas Administrative Code, Section 26.2 and Texas Transportation Code, Section 370.003)</small>		TXDOT						RMA							
		Design	Own	Acquire	Finance	Build	Maintain	Operate	Design	Own	Acquire	Finance	Build	Maintain	Operate
Highways	Non-tolled Road	▲	▲	▲	▲	▲	▲	▲	▲	▲	▲	▲	▲	▲	▲
	Toll Road	▲	▲	▲	▲	▲	▲	▲	▲	▲	▲	▲	▲	▲	▲
Rail	Freight	▲	▲	▲	▲	▲	▲	▲	▲	▲	▲	▲	▲	▲	▲
	High Speed	▲	▲	▲	▲	▲	▲	▲	▲	▲	▲	▲	▲	▲	▲
	Commuter	▲	▲	▲	▲	▲	▲	▲	▲	▲	▲	▲	▲	▲	▲
Transit	Regional Transit		▲	▲	▲	▲	▲	▲	▲	▲	▲	▲	▲	▲	▲
	Bus								▲	▲	▲	▲	▲	▲	▲
Other Modes	Airports								▲	▲	▲	▲	▲	▲	▲
	Maritime Ports	▲			▲	▲			▲	▲	▲	▲	▲	▲	▲
	Ferry	▲	▲	▲	▲	▲	▲	▲	▲	▲	▲	▲	▲	▲	▲
	GIWW	▲			▲	▲	▲	▲	▲	▲	▲	▲	▲	▲	▲
	Pedestrian/Bicycle	▲	▲	▲	▲	▲	▲	▲	▲	▲	▲	▲	▲	▲	▲
	Conveyor Belts								▲	▲	▲	▲	▲	▲	▲
	Freight Shuttle	▲	▲	▲	▲	▲	▲	▲	▲	▲	▲	▲	▲	▲	▲
Utilities	Electric								▲	▲	▲	▲	▲	▲	▲
	Water								▲	▲	▲	▲	▲	▲	▲
	Cable/Telecom								▲	▲	▲	▲	▲	▲	▲
	Pipelines								▲	▲	▲	▲	▲	▲	▲
	Utility Adjustments				▲		▲		▲	▲	▲	▲	▲	▲	▲
Other	Facilities		▲	▲	▲		▲	▲	▲	▲	▲	▲	▲	▲	▲
	Parking Facilities								▲	▲	▲	▲	▲	▲	▲
	Intermodal Hub								▲	▲	▲	▲	▲	▲	▲
	Border Crossing Inspection Station (except in Laredo)								▲	▲	▲	▲	▲	▲	▲

*Data acquired from the TxDOT Publication, Regional Mobility Authorities: A Partnership for Progress.

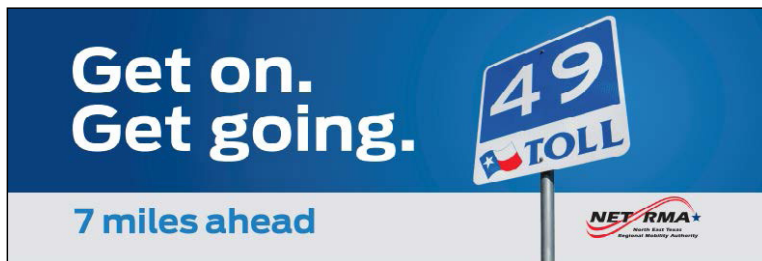
ANNUAL

► 2025 PUBLIC OUTREACH

In 2025, NET RMA's marketing and communications efforts incorporated a diverse array of strategies, including advertising, traditional marketing, events, social media, web design, and public relations. The marketing team continues to focus on tactics that increase toll tag sign-ups and Toll 49 ridership while improving the public perception of NET RMA.

During the year, the marketing team led efforts to create and deploy a new digital billboard ad campaign to promote Toll 49 and the benefits of getting a tag, while continuing to run Safe Driving videos and static ads throughout the area that were created in 2024. These campaigns were promoted through social media channels and website updates throughout the year. For the fifth year, NET RMA administered the Linda Thomas Safe Driving Scholarship for area high school seniors, who applied in record numbers.

NET RMA's PR team pitched and secured more than 80 news stories in area newspapers, TV stations, and online outlets. Media coverage highlights included stories on the Henderson Overton Branch Rail Line groundbreaking, the Linda Thomas Safe Driving Scholarship, NET RMA's sponsorship of the Atlanta Primary School STEAM Day, the Harrison County Priority Project related to improved traffic flow, the Titus County Priority Project related to improvements on FM 1735, and hiring the NET RMA's first Director of Engineering.



Get A Tag Campaign



New Safe Driving Campaign commercials



Quarterly Newsletters



Public Relations news stories



REPORT

▶ LINDA THOMAS SCHOLARSHIP PROGRAM

"The volume and quality of scholarship applications we receive each year is something we are truly proud of.

Students share meaningful personal stories, and we are grateful to the parents, counselors, and teachers who encourage them to apply."

Andrea Williams-McCoy
Vice-Chair
Chair of Public Outreach Committee



Linda Thomas Safe Driving scholarship winners

The NET RMA is proud to announce the recipients of the 5th annual Linda Thomas Safe Driving Scholarship. The program promotes safe driving awareness among North East Texas high school students and their communities.

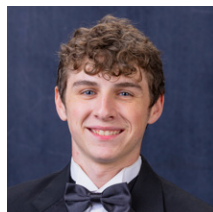
Ten outstanding students from NET RMA's member counties were awarded \$2,000 each to support their college education. Recipients were selected from a total of 135 applicants based on the strength of their essays, academic achievements, and extracurricular involvement.



Tristan Carter
Bowie County



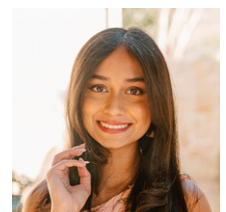
MaKannah Duncan
Kaufman County



Daniel Kernes
Wood County



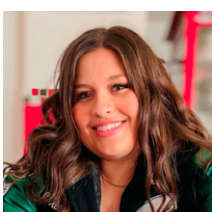
Sydney Hines
Smith County



Omika Patel
Gregg County



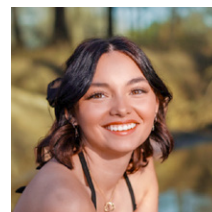
Parker Pierce
Smith County



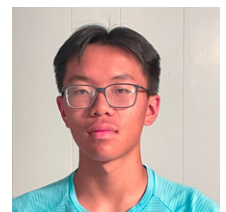
Carolyn Purdum
Gregg County



Joe Ray
Gregg County



Emilee Reed
Wood County



Vincent Wong
Cass County

ANNUAL

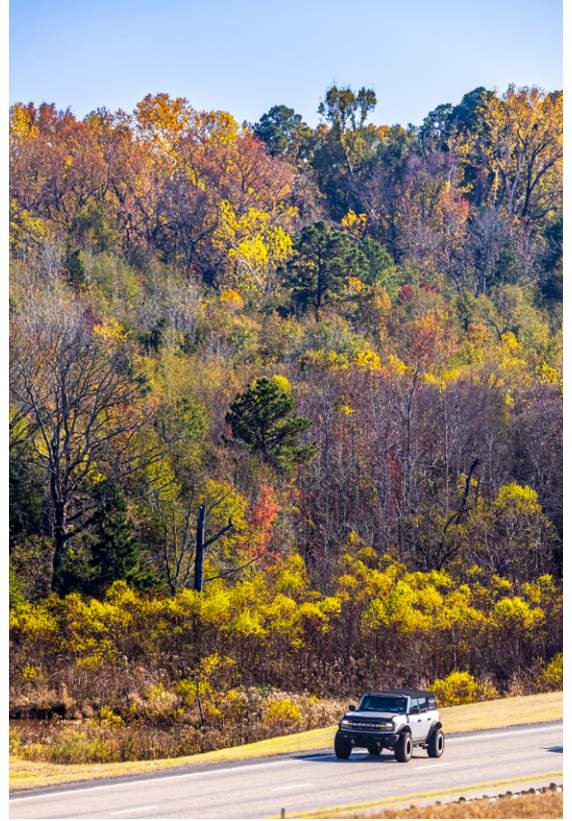
► TOLL 49 SPRING



REPORT

2025

▶ TOLL 49 FALL



13



ANNUAL

► TOLL 49 PUBLIC BENEFITS

SAVING TIME, REROUTING REGIONAL TRAFFIC & GROWING ECONOMIC OPPORTUNITIES

Due to Tyler's job growth rate being twice the national average and a continual influx of people relocating to the city, Toll 49 has also experienced increasing volumes on its 32-mile road.

Since 2014, the area within a 2-mile radius of the toll road has seen many new developments. This includes the Village at Cumberland Park, which at the time of construction was the largest retail center being built in Texas. Additional growth included a second police sub-station, a new 41,000-square-foot hospital, and an expansion of a local park, all near the South Broadway intersection with Toll 49. In 2021, a state-of-the-art 55,000 square foot Veterans' Administration Tyler Outpatient Clinic opened only 3 minutes away from Toll 49. Across the street, Parkside, a development with more than 600,000 square feet of high-profile retail, restaurants, and entertainment venues, is being created. Its first retail business will be a BJ's Wholesale Club.

Other areas near the road that have also seen expansions include a new 300-acre East Texas fairgrounds location on the west side. Bellwood, a mixed-use area of recreational, commercial, and residential spaces, has already secured several new businesses, including a new Brookshire's Grocery Store. There is also an entirely new event venue called The Cannery which opened in Lindale near the north end of Toll 49.

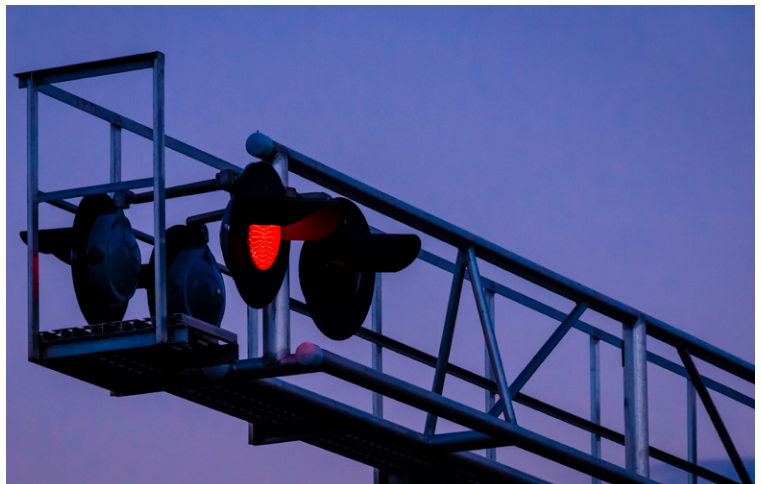
The NET RMA believes in and supports the accelerated development of infrastructure projects in Northeast Texas. To demonstrate this commitment, the Authority has awarded a total of \$3.4M to its member counties in the form of priority project grants during the past 10 years. This includes airport, rail, roadway and infrastructure projects.



Increased area growth has also meant increasing volume on Toll 49



Economic growth and development has continued within close proximity of Toll 49



NET RMA grants continue to provide funding for infrastructure and transportation projects for participating counties

14



REPORT

► PRIORITY PROJECTS

The NET RMA is continuing to focus on transportation and infrastructure improvements throughout the NET RMA member counties.

RUSK COUNTY

On October 15, 2025, partners and community members gathered to celebrate the groundbreaking of the Henderson Overton Branch Rail Line Enhancement Project, marking more than \$15 million in improvements. The project was made possible by an \$8.48 million FRA Consolidated Rail Infrastructure & Safety Improvements (CRISI) federal grant, a matching public-private investment, and a grant from NET RMA. The project will modernize critical rail infrastructure, strengthen Rusk County's economy, and create hundreds of jobs.



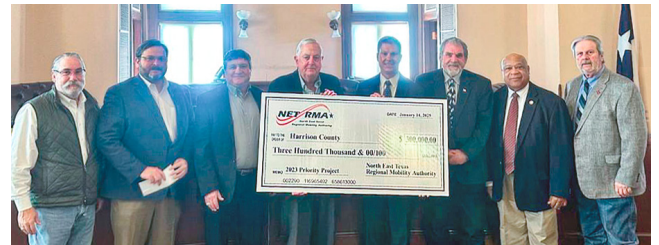
The NET RMA participated in groundbreaking ceremonies for the Henderson Overton Branch Rail Line Enhancement Project.



The Henderson Overton Branch Rail Line Enhancement Project included more than \$15 million in improvements to modernize critical rail infrastructure.

HARRISON COUNTY

\$300K was presented to Harrison County for its Lansing Switch reconstruction project. This project promoted traffic flow in the rural area between two of the most popular areas of Harrison County and also positively impacted the values of residential structures located along the road.

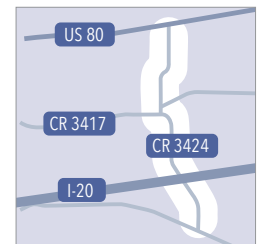


Glenn Green and Gary Halbrooks attend the grant presentation to Harrison County

Lansing Switch Reconstruction Project

Location: Lansing Switch Road, also known as CR 3424

NET RMA Contribution: \$300,000



TITUS COUNTY

Titus County Widening & Straightening of FM 1735. The project strengthened the development of the new loop including residential development by producing a safer and faster route to the schools, college, and other parts in the South East quadrant of the county.

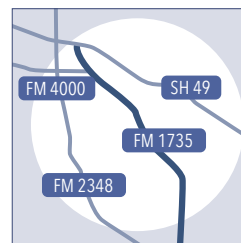


Glenn Green and Gary Halbrooks attend the grant presentation to Titus County

Widening & Straightening FM 1735

Location: FM 1735 South of SH 49

NET RMA Contribution: \$320,000



ANNUAL

▶ TOLL 49 FUN FACTS



The NET RMA Toll 49 maintenance team replaces and fixes an average of \$68k worth of signs every year.



To improve the beautiful scenic route along Toll 49, mowing cycles are timed just right to help more flowers bloom every year.



The NET RMA diligently makes conscientious efforts to maintain the habitat for the protected Barn Swallows of Texas, along toll road bridges.



An average of 1300 delineators are replaced every year along the toll road.



In support of Tyler being the Rose Capital of America, there are 48 roses along the toll road bridges. Can you find them all?



2025 highest traveled month: October



Raised pavement markers, (RPM's) are replaced every 2 years with additional replacement cycles every 6 months as needed.



REPORT

2025

► TOLL 49 MAINTENANCE & IMPROVEMENTS

In 2025, Toll 49 saw a major nighttime road improvement with the resurfacing of a 5-mile section beginning at I-20 and continuing south to just north of SH 64. This application included a new 2½" surface overlay using a Superpave asphaltic mixture which will prolong the life of the roadway while re-establishing a smooth high-quality driving surface.

Gantry upgrades and maintenance also continued during nighttime hours providing safe working conditions and minimal traffic impact.

The maintenance team continued regular mowing and vegetation control. Severe weather events caused an increase in sign installation, maintenance, and repairs. Ongoing daily trash and debris removal maintained a neat and safe environment along the roadway.



5-mile overlay using a Superpave asphaltic mixture.



Installation & maintenance of signage.



Applying striping after milling and overlay operations.



Replacing gantry sensor strips during nighttime road closure.



Mowing and vegetation control continues throughout the year.

17

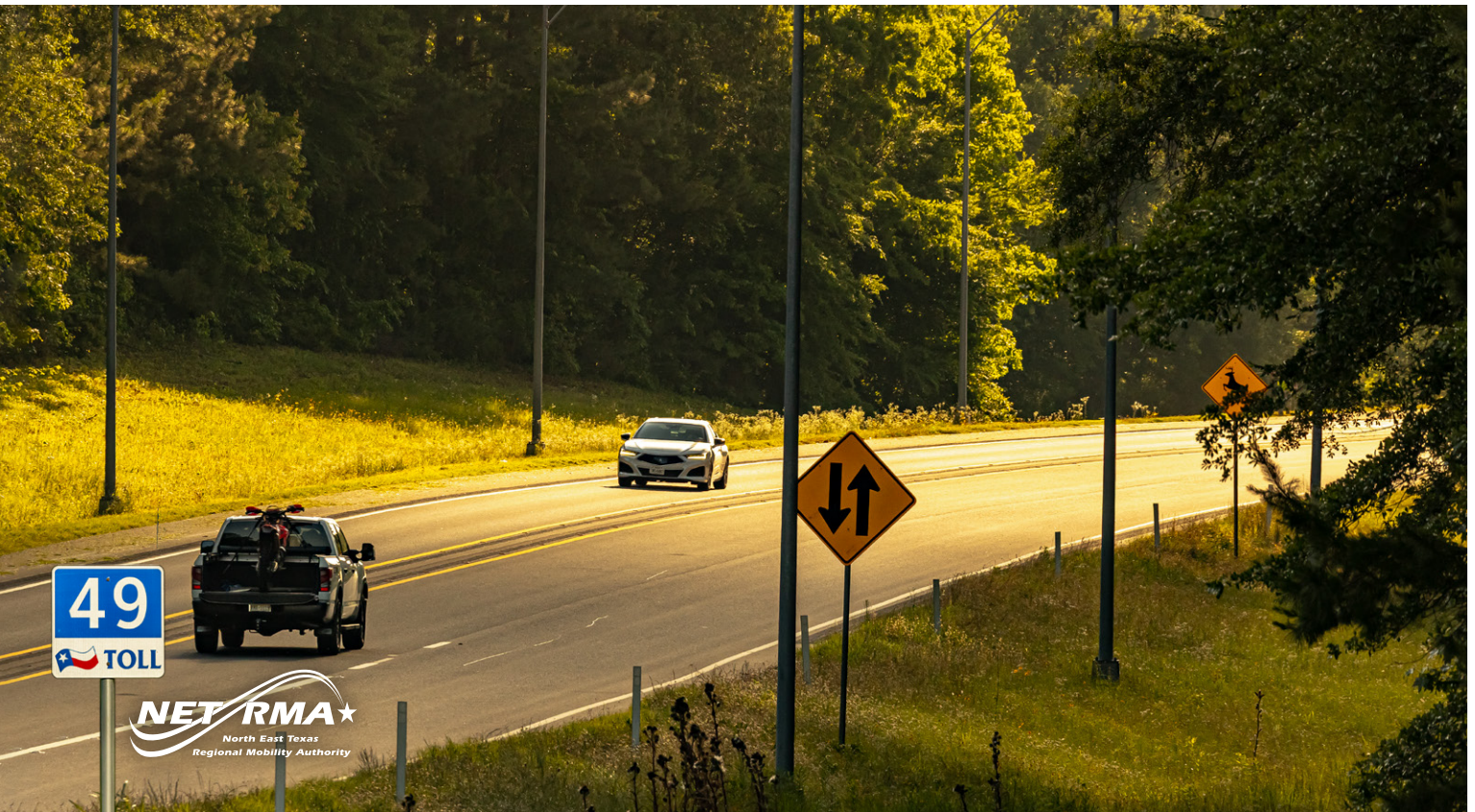
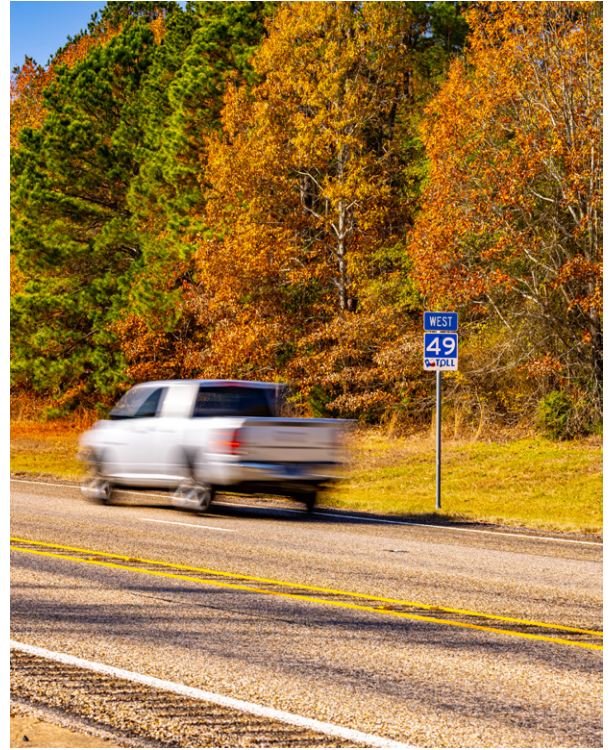


ANNUAL

▶ FINANCIAL & ADMINISTRATIVE PERSPECTIVE

Financial Perspective gross toll revenue collected through September 2025 is \$26,204,100. In October 2025, the NET RMA refunded its outstanding bonds and issued \$133,365,000 in senior lien revenue and refunding bonds and \$47,775,000 in subordinate lien refunding bonds.

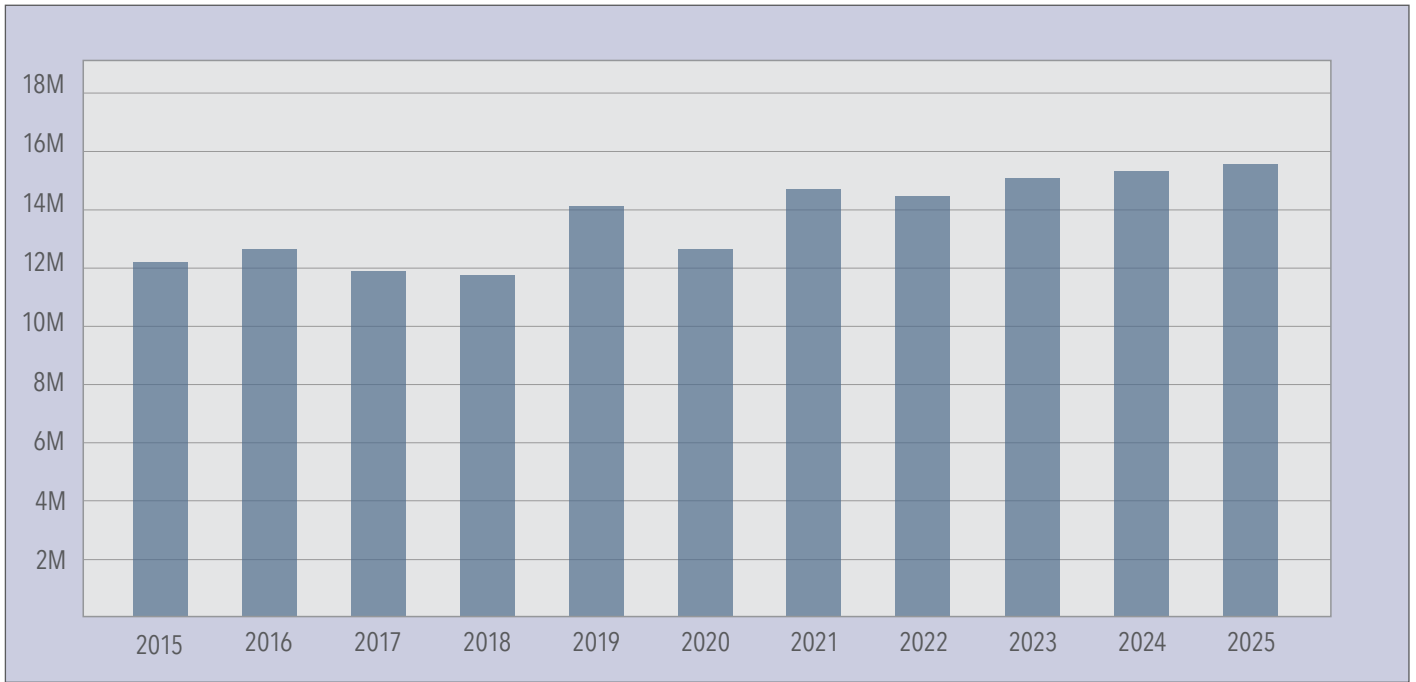
The NET RMA held eight board meetings, 49 committee/ miscellaneous meetings, and eight meetings with elected officials in 2025.



REPORT

2025

▶ TOLL 49 USAGE TRANSACTIONS



19



ANNUAL

▶ EXECUTIVE DIRECTORS REMARKS



Glenn H. Green
Executive Director

I am honored to have been at the helm of the North East Texas Regional Mobility Authority for almost 6 years. It has been a pleasure to work with our member counties, cities, MPOs, the East Texas Council of Governments (ETCOG), TxDOT and elected officials to move transportation forward in an innovative fashion for our region.

- ▶ Implemented the NET RMA Storm Water Management Program
- ▶ Provided support for the NETEX Rail facilities in and around Titus County
- ▶ Explored opportunities for a data center service for the East Texas Region
- ▶ Attended Longview and Tyler MPO board meetings as well as ETCOG board meetings
- ▶ Partnered with ETCOG, TxDOT, and other regional entities for the Safe Streets and Roads for All Grant Program
- ▶ Hired a Director of Engineering to plan, execute and manage engineering programs in the East Texas Region
- ▶ Explored broadband and weigh station opportunities in the region
- ▶ Launched the fifth Safe Driving Campaign through all media channels
- ▶ Awarded \$20,000 to East Texas high school seniors for their essay submission to the fifth annual Linda Thomas Safe Driving Scholarship Program
- ▶ Held eight board meetings
- ▶ Continued vegetation, slope, and erosion control measures at various locations along the toll road right of way
- ▶ Continued to perform an engineering analysis on Toll 49 to finalize a 10-year pavement management plan
- ▶ Executed steps in the Environmental Impact Statement (EIS) for Segment 6, including holding two public meetings and one external agency meeting
- ▶ Completed the 2024 financial audit with an unmodified opinion

The Authority accomplished the following during 2025:

- ▶ Streamlined the NET RMA Investment Policy, making it more impactful for the organization
- ▶ Evaluated opportunities and executed the refunding of the existing NET RMA Toll revenue bonds
- ▶ Continued evaluating safety measures on Toll 49
- ▶ Secured an update to the 2022 Comprehensive Traffic and Toll Revenue Study for Toll 49
- ▶ Performed and implemented the plans for an overlay on Segment 3B, approximately 5 miles of new SuperPave. This project ensures additional strength of the road and provides a smooth, quiet roadway for the driving public
- ▶ Secured an interlocal agreement with TxDOT for incident response and maintenance and traffic operations
- ▶ Designated a pool of firms to provide underwriting service for the financing of NET RMA projects
- ▶ Supported the maintenance and expansion of Red River Army Depot's Operations in Bowie County
- ▶ Entered into an agreement with Van Zandt County to provide maintenance consulting services
- ▶ Updated and implemented a comprehensive Title VI Program

Sincerely,

Glenn H. Green
Executive Director, NET RMA 2025



REPORT

2025

▶ NET RMA FINANCIAL SUMMARY

Actual and Budgeted Revenues and Expenses for the Fiscal Year Ended September 30, 2025
and Budgeted Revenues and Expenses for the Fiscal Year Ending September 30, 2026.

	FY 2025 Adopted Budget	FY 2025 Actual	FY 2026 Adopted Budget
REVENUE:			
Toll revenue – electronic	\$ 18,470,400	\$ 20,089,571	\$ 20,855,250
Toll revenue – video	8,500,000	8,719,580	9,369,750
Other Income	0	1,424,596	0
Income on investments	0	96,037	0
Interest income	1,965,500	1,942,765	1,765,300
TOTAL REVENUES	28,935,900	32,272,549	31,990,300
EXPENSES:			
Administration	3,298,178	3,056,689	3,354,278
General engineering consultants	520,000	634,319	700,000
Project development support	675,000	1,635,258	630,000
Roadway maintenance	2,347,000	2,137,791	2,309,500
Roadway striping (renewal & replacement)	250,000	0	300,000
Roadway bridge maintenance (renewal & replacement)	0	0	600,000
Toll processing/collection costs	3,985,025	4,217,067	4,407,065
Toll maintenance support	650,042	751,186	705,000
Toll operations support	362,510	297,895	345,760
Other non-operating expense	0	401,503	0
TOTAL EXPENSES	12,087,755	13,131,708	13,351,603
NET BEFORE FINANCING COSTS	16,848,145	19,140,841	18,638,697
FINANCING COSTS			
Interest expense	7,335,814	7,324,007	4,449,7094
Bond issuance costs		184,061	2,191,185
NET AFTER FINANCING COSTS	9,512,331	11,632,773	11,997,803
OTHER NON-CASH EXPENSES			
Depreciation expense	11,500,000	11,399,071	11,800,000
TOTAL OTHER NON-CASH EXPENSES	11,500,000	11,399,071	11,500,000
CHANGE IN NET ASSETS (DECREASE)	\$ (1,987,669)	233,702	\$ 197,803

ANNUAL



22



REPORT

2025





1011 PRUITT PLACE TYLER, TX 75703 903.630.7894 NETRMA.ORG

